

# Northwestern Medicine Glenview Outpatient Center

2701 Patriot Boulevard, Glenview, Illinois 60026

---

**Allergy | Endocrinology | Nephrology**

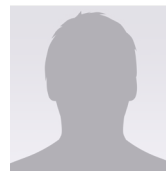
Allergy: 847.535.7647 | Endocrinology: 847.535.7647 | Nephrology: 847.535.7647



**Jacqueline Cartier, MD**  
Endocrinology



**Wenyu Huang, MD**  
Endocrinology



**James J. Paparello, MD**  
Nephrology



**Anthony J. Pick, MD**  
Endocrinology



**Cheryl Steiman, MD**  
Allergy and Immunology



**Emily D. Szmuiłowicz, MD**  
Endocrinology



**Amy O. Thomas, MD**  
Allergy and Immunology



**Natalia E. Marcinkowski, APRN**  
Endocrinology



**Laura Nishi, PA-C**  
Nephrology



**Adina B. Rubin, APRN**  
Endocrinology

# Northwestern Medicine Glenview Outpatient Center

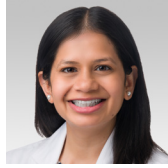
---

## Cancer Center

Cancer Center: 847.582.2134 | Palliative Care: 847.535.7058



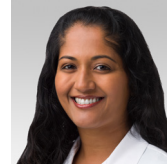
**Valerie M. Nelson, MD**  
Medical Oncology



**Bindiya G. Patel, MD**  
Medical Oncology



**Michael S. Schieber, MD**  
Hematology Oncology



**Komal D. Zacharia, MD**  
Palliative Medicine



**Katie Andel, PA-C**  
Medical Oncology



**Stephanie J. Clapham, AGNP**  
Palliative Medicine  
and Supportive Care



**Ellen M. Mortell, FNP-BS**  
Medical Oncology



**Jenna B. Ottenheimer, PA-C**  
Medical Oncology

---

## Northwestern Medicine Bluhm Cardiovascular Institute

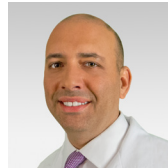
Cardiology: 847.534.3278 | Vascular: 847.535.7665



**Anand Brahmandam, MD**  
Vascular Surgery



**Mugurel Bazavan, MD**  
Cardiology



**Micah J. Eimer, MD**  
Cardiology



**Benjamin H. Freed, MD**  
Cardiology



**Kaustubha D. Patil, MD**  
Cardiac Electrophysiology



**Arjun Sinha, MD**  
Heart Failure and  
Heart Transplantation



**Neil J. Stone, MD**  
Clinical Lipidology



**Joshua A. Tepper, MD**  
Vascular and Interventional  
Radiology

# Northwestern Medicine Glenview Outpatient Center

---

## Northwestern Medicine Bluhm Cardiovascular Institute (continued)

Cardiology: 847.534.3278 | Vascular: 847.535.7665



**Tadaki M. Tomita, MD**  
Vascular Surgery



**Nishant Verma, MD**  
Cardiac Electrophysiology



**Esther E. Vorovich, MD**  
Cardiology



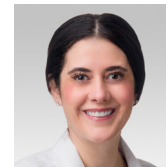
**Katie Konopacz, APRN, CNP**  
Cardiology



**Jaklyn Lynch, PA-C**  
Vascular Surgery



**Heather A. Sandler, APRN**  
Cardiology



**Katelyn Schultz, PA-C**  
Cardiology

---

## Dermatology

847.535.7664



**Rebecca Cummins, MD**  
Dermatology



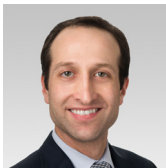
**Gerta S. Janss, MD**  
Dermatology



**Phil Kim, MD**  
Dermatology



**Betty Kong, MD**  
Dermatology



**Benjamin R. Marks, MD**  
Dermatology



**Simon S. Yoo, MD**  
Dermatology Surgery

# Northwestern Medicine Glenview Outpatient Center

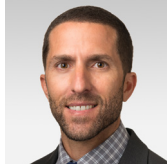
---

## Gastroenterology/Hepatology | General Surgery

Gastroenterology/Hepatology: 847.535.6083 | General Surgery: 847.234.4310



**Darren M. Brenner, MD**  
Gastroenterology



**James Frydman, MD**  
Surgery



**John N. Gaetano, MD**  
Gastroenterology  
Hepatology



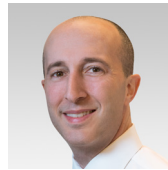
**Sean W. P. Koppe, MD**  
Hepatology



**Hina Omar, MD**  
Gastroenterology



**Jasmine Sinha, MD**  
Interventional  
Gastroenterology



**Christian G. Stevoff, MD**  
Gastroenterology



**Jamie Brenna Wabich, MD**  
Gastroenterology



**Sarah Anderson, APRN**  
Hematology

---

## Neurosciences

847.535.7658



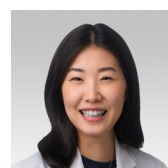
**Ian S. Katznelson, MD**  
Neurology



**Charulatha P. Nagar, MD**  
Neurology



**Neil K. Shetty, MD**  
Neurology  
(Movement Disorders)



**Suemin J. Yoon, MD**  
Neurology  
Clinical Neurophysiology

# Northwestern Medicine Glenview Outpatient Center

---

## Obstetrics and Gynecology

847.535.7057



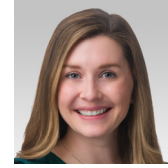
**Kristin A. Dolling, MD**  
Obstetrics and Gynecology



**Micah W. Garb, MD**  
Obstetrics and Gynecology



**Lucy Heo, DO**  
Obstetrics and Gynecology

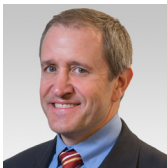


**Kyle E. Reynolds, MD**  
Obstetrics and Gynecology

---

## Otolaryngology (Ear, Nose and Throat)/Audiology

847.535.6464



**Allen H. Carlins, MD**  
Otolaryngology



**Landon J. Duyka, MD**  
Ear, Nose and Throat



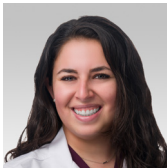
**Whitney E. Liddy, MD**  
Ear, Nose and Throat



**Sandeep Samant, MD**  
Ear, Nose and Throat



**Karthik Shastri, MD**  
Ear, Nose and Throat



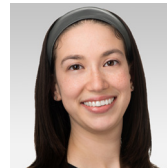
**Sarah G. Chiren, PA-C**  
Ear, Nose and Throat



**Patrick Murphy, PA-C**  
Ear, Nose and Throat



**Katie E. Rock, AuD**  
Audiology



**Sara A. Rudolph, AuD**  
Audiology

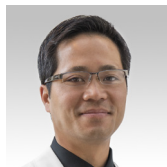
---

## Orthopaedics

847.535.8500



**Benjamin J. Davis, MD**  
Sports Medicine



**Wellington K. Hsu, MD**  
Spine Surgery



**Matthew D. Saltzman, MD**  
Shoulder and Elbow Replacement



**Taylor Sares, PA-C**  
Sports Medicine

# Northwestern Medicine Glenview Outpatient Center

## Primary Care – Internal Medicine

847.535.7157



**Janusz M. Dudek, MD**  
Internal Medicine



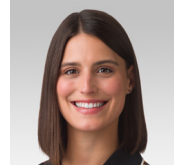
**Elyse T. Esrig, MD**  
Internal Medicine



**Roger V. Hecker, MD**  
Internal Medicine



**Matthew Hill, MD**  
Internal Medicine



**Megan Kosirog, MD**  
Internal Medicine



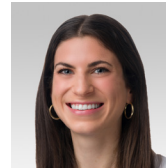
**Richard J. Miller, MD**  
Internal Medicine



**Courtney Noble, MD**  
Internal Medicine



**Gali R. Oren-Amit, MD**  
Internal Medicine



**Emily S. Tuchman, MD**  
Internal Medicine



**Karin B. Ulstrup, MD**  
Internal Medicine



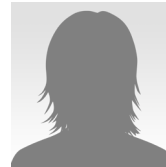
**Leonardo Vargas, MD**  
Internal Medicine



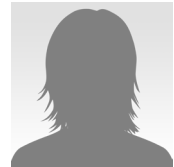
**Evan F. Wittke, MD**  
Internal Medicine



**Dana R. Wood, MD**  
Internal Medicine



**Kristin Burger, PA-C**  
Internal Medicine



**Lauren Lehman, PA-C**  
Internal Medicine



**Christian Charvet, APRN**  
Internal Medicine



**Chriselle A. Sloniker, APRN**  
Internal Medicine

# Northwestern Medicine Glenview Outpatient Center

---

## Primary Care – Pediatrics

312.926.7337



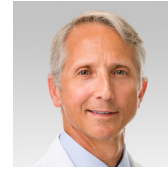
**Miriam Dreifuss, MD**  
Pediatrics



**Theresa L. Karacic, MD**  
Pediatrics



**Jennifer Kim, MD**  
Pediatrics



**Peter A. Lechman, MD**  
Pediatrics



**Jacqueline E. Leemputte, DO**  
Pediatrics

---

## Pulmonology

847.535.7647



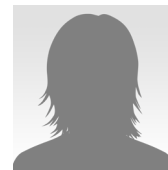
**Mohammed S. S. Alzoubaidi, MD**  
Sleep Medicine



**Jason C. Rho, MD**  
Pulmonology



**Alexis R. Wolfe, MD**  
Pulmonology



**Alyssa N. Van Denburg, PhD**  
Clinical Sleep Psychology

---

## Rheumatology

847.535.7647



**Mary A. Mahieu, MD**  
Rheumatology



**Eric M. Ruderman, MD**  
Rheumatology



# Northwestern Medicine Glenview Outpatient Center

---

## Urology

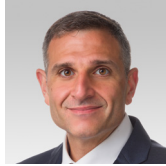
847.535.7657



**Amy E. Krambeck, MD**  
Urology



**Michael S. McGuire, MD**  
Urology



**Ashley Ross, MD**  
Urology



**Edward Schaeffer, MD**  
Urology



**Allison Shafran, PA-C**  
Urology



**Olivia K. Walsh, APRN**  
Urology

---

## Vision Care Center

847.535.6440



**Liza M. Cohen, MD**  
Ophthalmic Plastic



**Meghan E. Geiger, OD**  
Optometry



**Mary-Ann M. Mathias, MD**  
Ophthalmology



**Mary K. Russell, MD**  
Ophthalmology



**Dalia V. Zhang, MD**  
Ophthalmology

---

## Women's Health Physical Therapy

847.535.6430



**Laura Valentine, PT, DPT**  
Pelvic Physical Therapy

---

## Immediate Care

847.475.CARE (2273) | [immediatecare.nm.org](https://immediatecare.nm.org) | No appointment needed

Open 365 days per year, 8 am–8 pm (last patient registration at 7:45 pm) | Holiday hours: 8 am–4 pm

Imaging, laboratory services and Immediate Care available on-site



Northwestern Medicine Glenview Outpatient Center

TTY: 711  
[nm.org](https://nm.org)