

JUNE 2023

Parkinson's Disease and Movement Disorder Center Monthly News and Updates

UNIDOS POR EL PARKINSON

10 DE JUNIO DE 2023

Evento en persona

9 AM - 12:30 PM hora Centro

Lawndale Christian Conference Center

3750 W Odgen Ave, Chicago, IL, 60623

Evento virtual

10 AM - 12:15 PM hora Centro

11 AM - 1:15 PM hora Este

8 AM - 10:15 AM hora Pacífico

[Inscribase Aquí: Parkinson.org/Conferencia](https://www.parkinson.org/conferencia)

¡O utilice el código QR de la derecha para registrarse!



AGENDA

Habr  desayuno continental disponible para las familias asistentes



Bienvenida

Paulina Gonzalez-Latapi, MD, Chicago Movement Coalition

Introducci n a la enfermedad de Parkinson

Paulina Gonzalez-Latapi, MD, Northwestern Feinberg School of Medicine

Salud mental en la enfermedad de Parkinson

David Gonzalez, MD, Rush University System



Preguntas y respuestas

Moderado por Jenny Fearday, Parkinson's Foundation



Ejercicio –  Mu vase con nosotros!

Susana Miranda APN, PT, U Chicago



Gen tica del Parkinson / Mitos de la investigaci n

Ignacio Mata, MD, Cleveland Clinic



Oportunidades para la Investigaci n - Panel de expertos



Preguntas y respuestas

Moderado por Jenny Fearday, Parkinson's Foundation



Despedida y agradecimiento

Mitra Afshari, MD, Chicago Movement Coalition



Enlace de Registro

Northwestern Medicine*
Feinberg School of Medicine



Do you have Parkinson's disease and are interested in research?

You may be eligible for the Voice-PD study that aims to objectively quantify severity of vocal and speech related symptoms associated with Parkinson's Disease.

You qualify for the study if you are ...

- > Diagnosed with PD, or
- > Prodromal PD, or
- > Age-matched healthy control

What is involved if I participate?

- > Study duration: 10 weeks
- > 7 study visits of combined televisits and at-home assessments
- > Speech tests, PD clinical assessment, and short questionnaires

Participant Resources:

- > Reimbursement will be provided for your time during on-site and telhealth visits.



If you are interested in participating or want to learn more, please contact

Natasha Cabigon

Natasha.cabigon@northwestern.edu

Telephone: (312) 503-0510

JOFFREY BALLET
COMMUNITY ENGAGEMENT ★ CHICAGO
EXCITE | EXPLORE | ENRICH

Registration for Dancing with

Parkinson's has closed.

Due to popularity of this class, registration for Dancing with Parkinson's has closed. If you are interested in being added to our waitlist, please email either Carly Liegel at cliegel@joffrey.org or Katie Fagan at movementdisorders@nm.org.

Dancing with Parkinson's is also looking for VOLUNTEERS!

We are in need of 3 volunteers. We are looking for folks who can sit, stand, & move for an hour, enjoy being with people, and are comfortable/enjoy dance! If you are interested in volunteering, please reach out to either Carly or Katie (emails listed above).

Still: A Michael J. Fox Movie

Have you seen *Still: A Michael J. Fox Movie* yet? This past month, Apple TV+ released this documentary about the beloved movie star who was diagnosed with Parkinson's Disease at age 29. Recounting his life in his own words, Michael J. Fox details: his childhood, rise to fame, and his professional peak. He goes on to recount his diagnosis and details much of his private journey as he and his family have grappled with PD for over 30 years.

To watch the trailer, click [here](#).

To access the movie, click [here](#).

**Brian Grant Foundation's
Wellness Webcast:**



Global Perspectives on Parkinson's

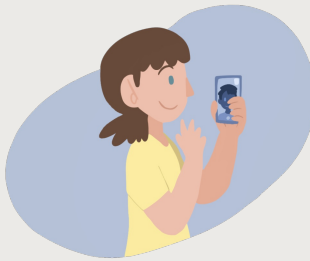
June 14th 2-3pm CST

Join a discussion with Soania Mathur, MD, the host of our third podcast series who will be sharing global perspectives on Parkinson's and the medication equity efforts

of the PD Avengers.

The panel discussion will be followed by a moderated Q&A. You can submit questions to info@briangrant.org or during the live presentation.

[Register here](#)



Virtual Support Group and Class Schedule

We use Zoom for all our support groups!
Some classes meet in person.

Register for any of the groups and classes [here!](#)

General PD Support Group
1st Wednesday of the month
2:00 pm – 3:00 pm

Women and PD Support Group
2nd Wednesday of the month
11:00 am – 12:00 pm

PD Care Partner Support Group
2nd Wednesday of the month
2:00 pm – 3:00 pm

Young Onset PD Support Group
4th Wednesday of the month
6:00 pm – 7:00 pm

PD 101
Next class August 16

Therapy Tuesdays Exercise Class
1st Tuesday of the month
11:00 am – 12:00 pm

Chair Yoga for PD
2nd, 3rd, 4th (and 5th) Tuesday
of the month
2:00 pm – 3:00 pm

Art Therapy for PD
3rd Monday of the month
10:00 am – 11:00 am

Improv for PD
Thursdays 2:00pm -3:30pm
May 4- June 22

PD 201

Next class September 6

Dancing w/ Parkinson's
Thursdays 11:30-12:30
July 13- August 10

For a complete list of our groups and classes, including those offered at Central DuPage and Lake Forest Hospitals, click [HERE!](#)



UPCOMING LOCAL EDUCATIONAL PROGRAMS

Midwest Chapter Symposium: Pain and Parkinson's

Date: Saturday, June 3 2023 | 1:00 p.m. - 4:00 p.m. CT

(Check-in and lunch start at 12:00 p.m.)

Location: Naperville Conference Center

1120 E Diehl Road

Naperville, IL 60563

Format: This program is hybrid, you can attend in person or join via Zoom

Registration: For more information and to register, click this link: [Parkinson.org/Midwest2023](https://www.parkinson.org/Midwest2023) or call Jessica at 312-762-5706

Spanish Program: Unidos Por El Parkinson

Date: Saturday, June 10, 2023 | 9 a.m. - 12:30 p.m. CT

Location: Lawndale Christian Conference Center

3750 W Ogden Ave

Chicago, IL 60623

Format: This program is hybrid, you can attend in person or join via Zoom

Registration: For more information and to register, click this link: [Parkinson.org/Conferencia](https://www.parkinson.org/Conferencia)

UPCOMING NATIONAL EDUCATIONAL PROGRAMS

PD HEALTH @ HOME (National Virtual Programming)

Don't forget our weekly (M, W, F) virtual programming that focuses on Mindfulness, Wellness and Fitness! Our PD Health @ Home offers so much! To learn more visit this

link: [Parkinson.org/PDHealth](https://www.parkinson.org/PDHealth)

As a reminder, the Foundation has a variety of resources available to support you and the PD community, including:

[HELPLINE: 1-800-4PD-INFO \(473-4636\)](tel:1-800-4PD-INFO)

or helpline@parkinson.org

[PD Conversations](#) an online PD community, to connect with others living with PD and be part of a network of support.

[Newly Diagnosed Kit](#)

[Medical Alert Card](#)

[Fact sheet: Staying Safe in the Hospital with Parkinson's Disease](#)

[Tips for How to Prepare for a Telemedicine Appointment](#)

[Aware in Care Kit](#)

[Podcasts](#)

PARKINSON'S DISEASE AND MOVEMENT DISORDERS CENTER

Connect with us



Northwestern University | Ward 12-140, 303 E Chicago Ave, Chicago, IL 60611

[Unsubscribe neurocommunications@northwestern.edu](mailto:unsubscribe_neurocommunications@northwestern.edu)

[Update Profile](#) | [Constant Contact Data Notice](#)

Sent by movementdisorders@nm.org powered by



Try email marketing for free today!